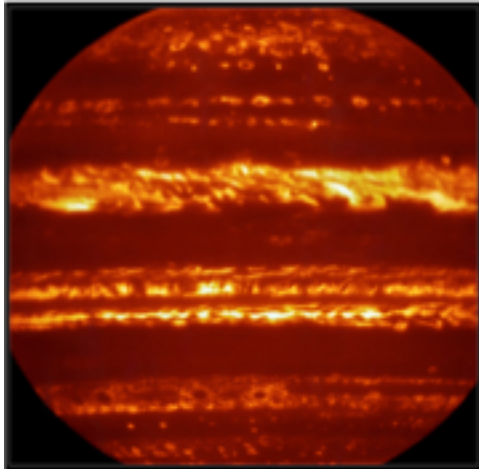
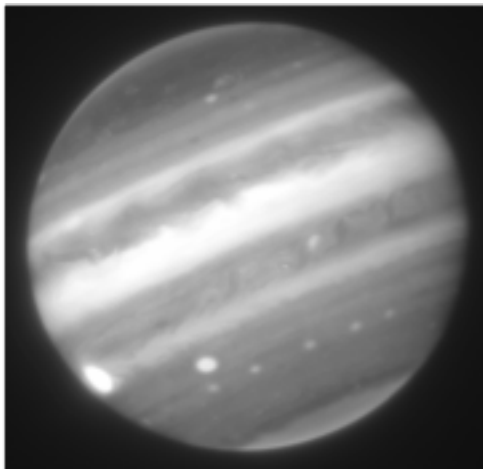


Rohini Giles – Infrared Observations of Solar System Planets



- Jupiter at 5 microns
- Atmospheric window
→ probes planet's middle troposphere
 - Measure abundances of disequilibrium species as proxy for atmospheric dynamics



- Jupiter at 1-3 microns
- Much higher opacity – measuring sunlight reflected from upper cloud decks
 - Study upper cloud structure and changing morphology over time

TEXES: Texas Echelon Cross Echelle Spectrograph

- Visitor instrument at IRTF and Gemini-North
- Mid-infrared (4.5-25 microns)
- High-resolution ($R \sim 80,000$ in high res mode)
- Can map extended objects

